





HYBRID PU KOREAN

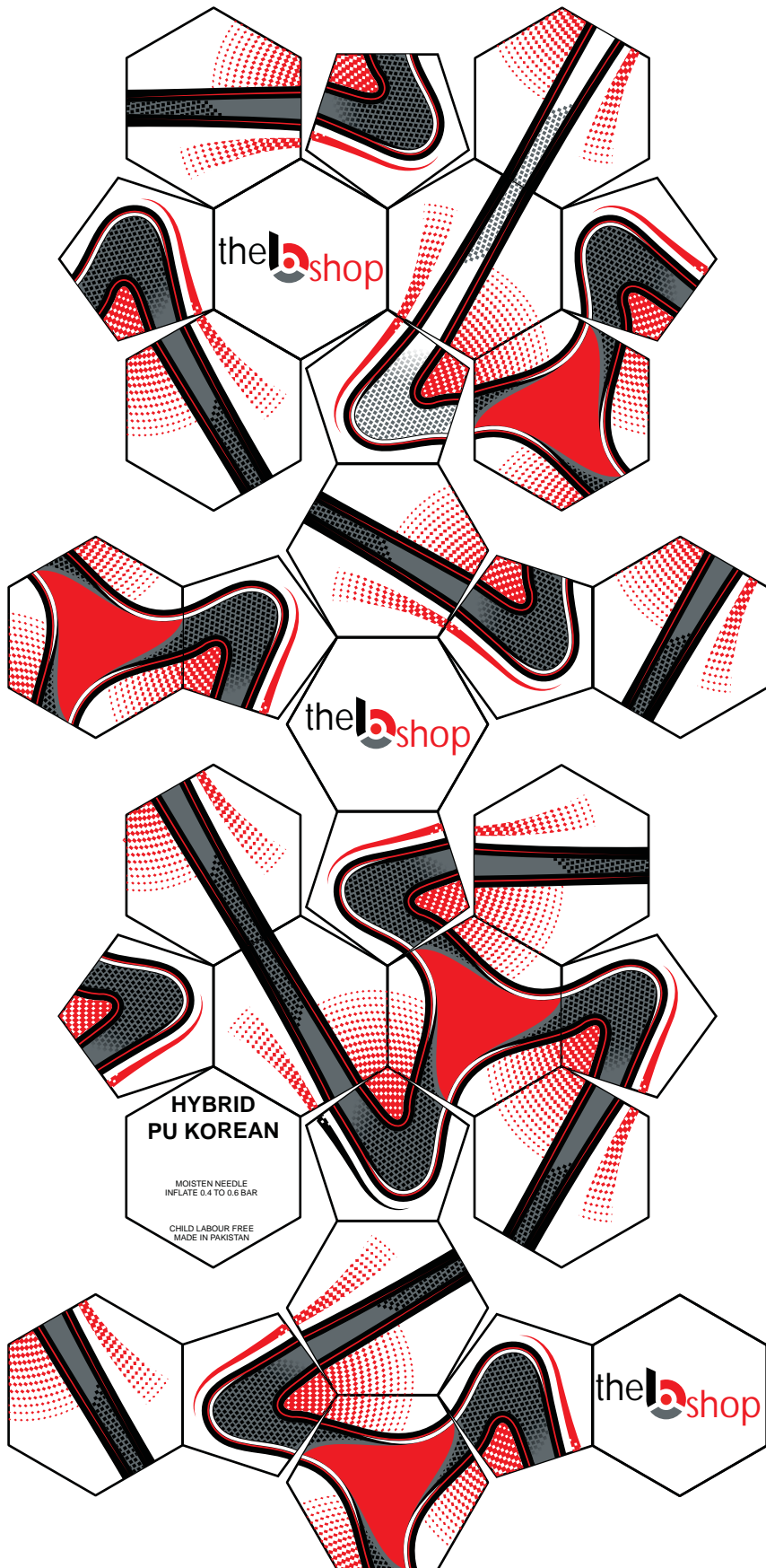
Material: PU KOREAN

Thickness: 1.1mm laminated with Eva sheet 2.5mm

Sewing: High Frequency stitched

Sealed: with Silicon Gel

Inner Tube: Taiwan butyl bladder with Thread winding





HYBRID PU KOREAN

Material: PU KOREAN

Thickness: 1.1mm laminated with Eva sheet 2.5mm

Sewing: High Frequency stitched

Sealed: with Silicon Gel

Inner Tube: Taiwan butyl bladder with Thread winding





HYBRID PU

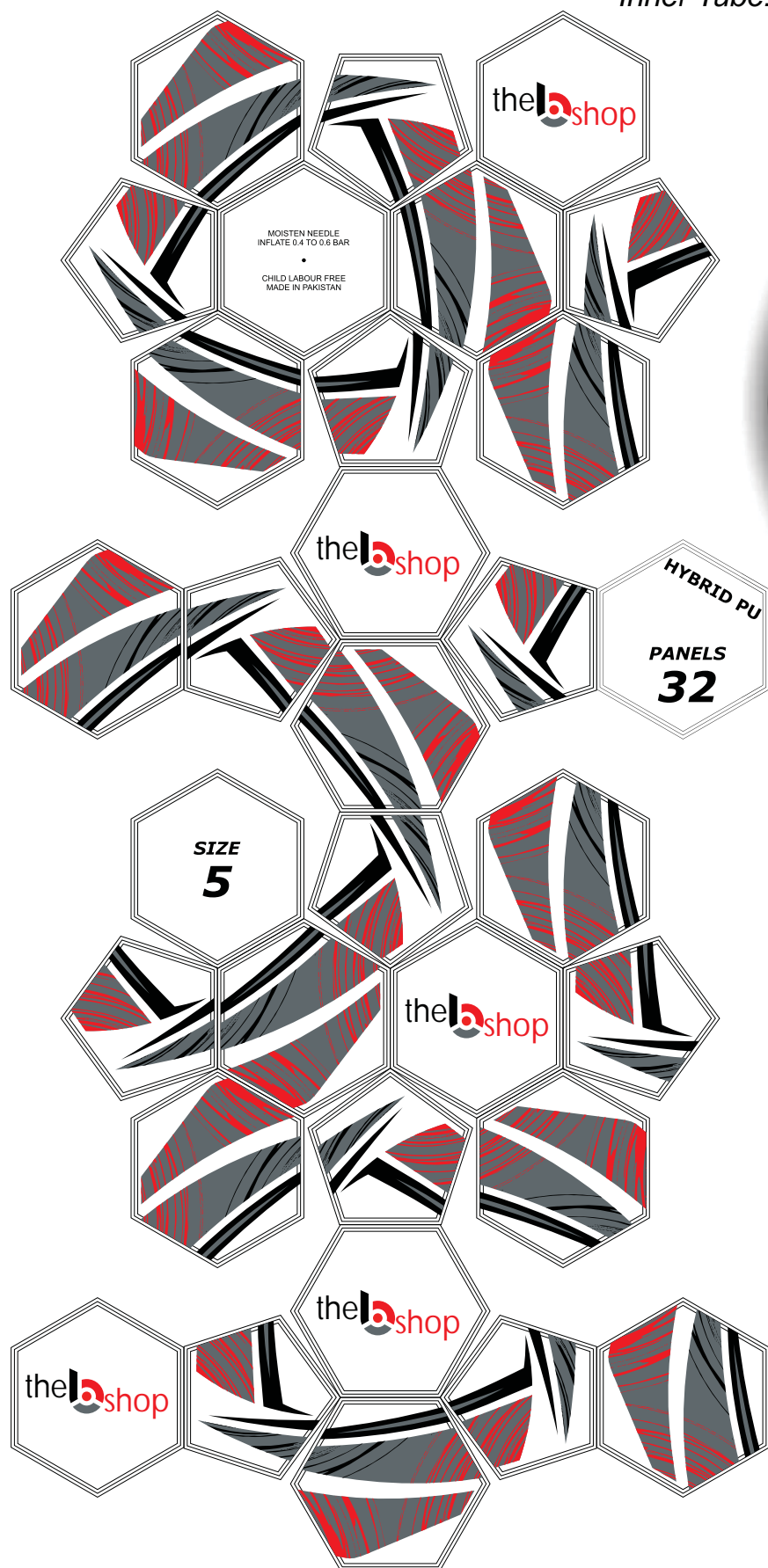
Material: PU

Thickness: 1.1mm laminated with Eva sheet 2.5mm

Sewing: High Frequency stitched

Sealed: with Silicon Gel

Inner Tube: Taiwan butyl bladder with Thread winding





VICTORY PERL

Material: PU SOFT

Layers: 4 layers Poly Cotton

Thickness: 2 mm with Eva

Sewing : Hand Stitched with Polyester Thread

Inner tube: Taiwan Butyl Bladder





VICTORY WHITE

Material: PU SOFT

Layers: 4 layers Poly Cotton

Thickness: 2 mm with Eva

Sewing : Hand Stitched with Polyester Thread

Inner tube: Taiwan Butyl Bladder





VICTORY STAR

Material: PU Soft

Layers: 1 layer Fabric

Thickness: 3 mm

Sewing MACHINE STITCH

Sealed: NO

Inner tube: Sr Rubber Bladder





VICTORY STAR

Material: PU Soft

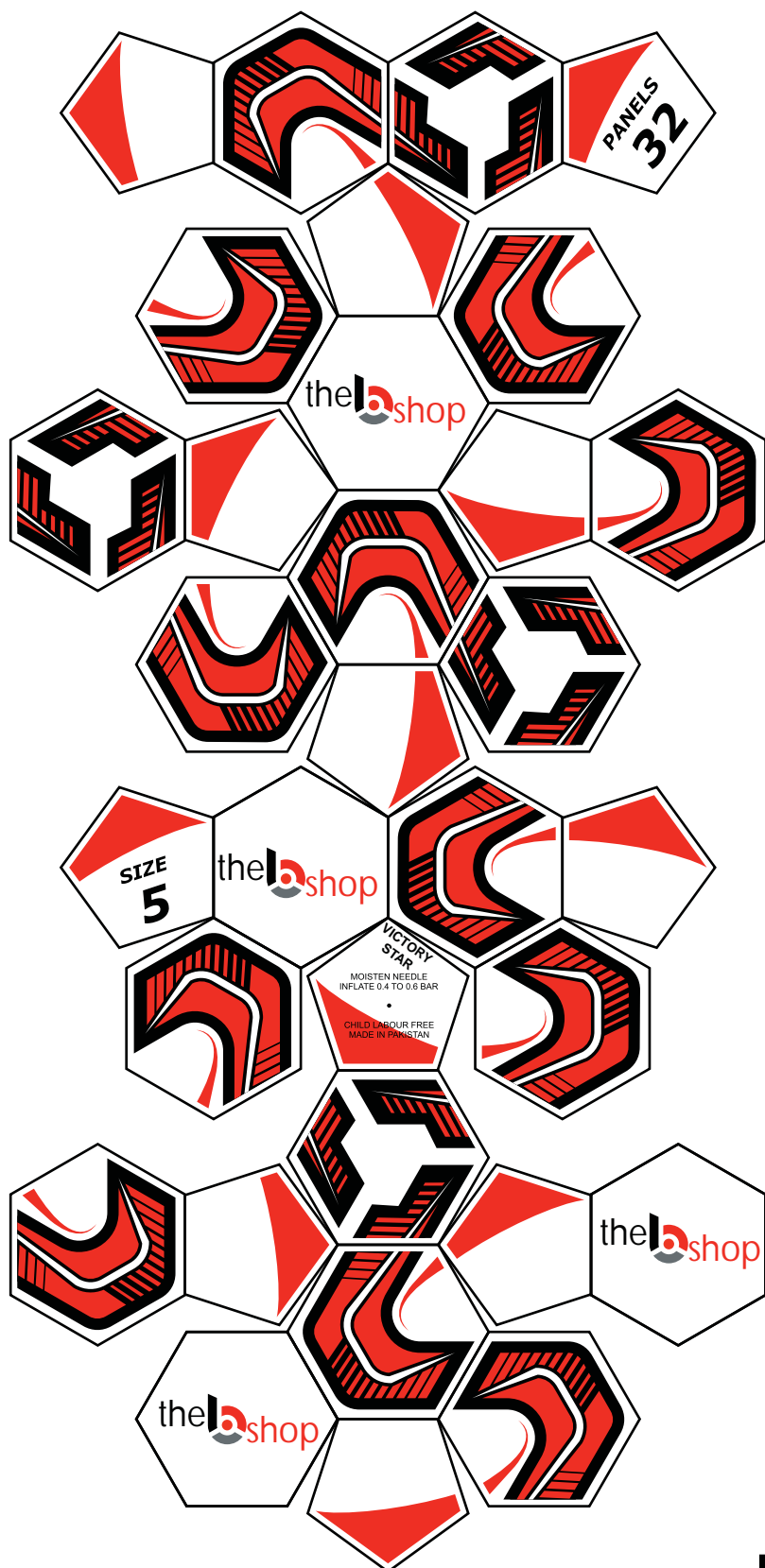
Layers: 1 layer Fabric

Thickness: 3 mm

Sewing MACHINE STITCH

Sealed: NO

Inner tube: Sr Rubber Bladder





ATTACK

Material: PU / PVC

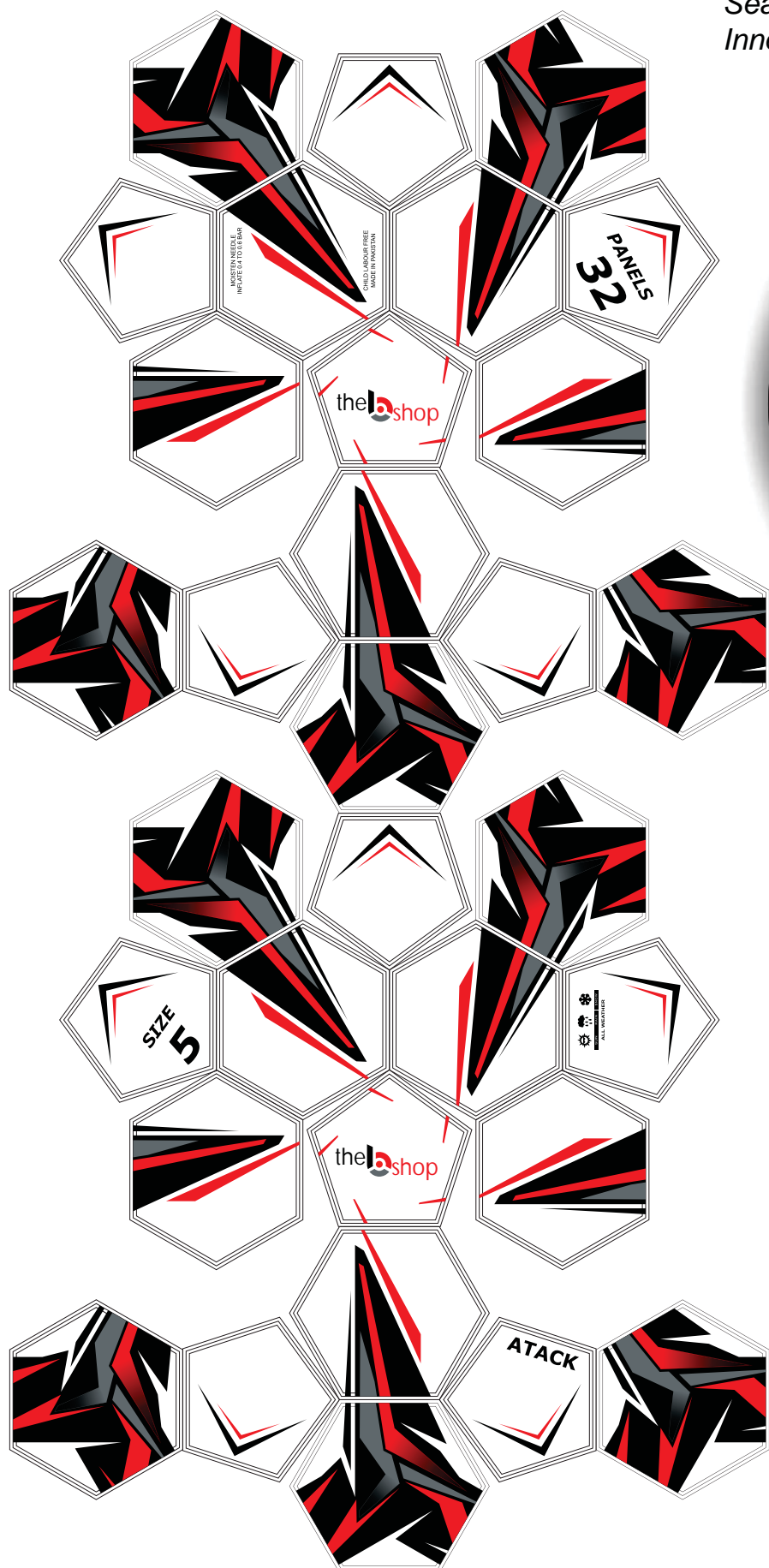
Layers: 4

Thickness: 1.4 mm

Sewing: HAND STITCH

Sealed: NO

Inner tube: Latex bladder with Butyl Valve



PROMO

Material: correct PVC

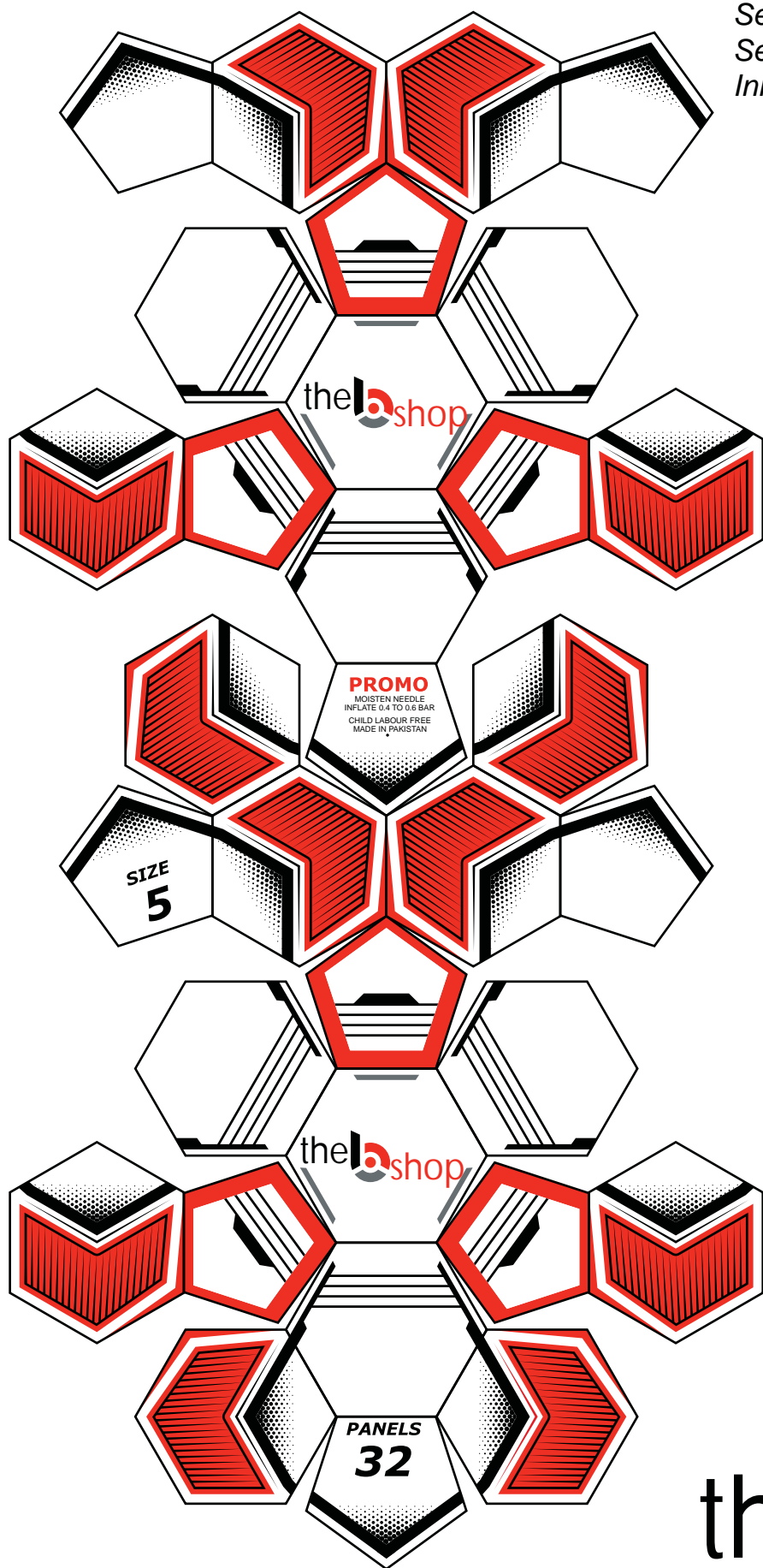
Layers: 2

Thickness: 1.1 mm

Sewing: Hand Stitched

Sealed: NO

Inner tube: Latex bladder with Butyl Valve





PROMO

Material: correct PVC

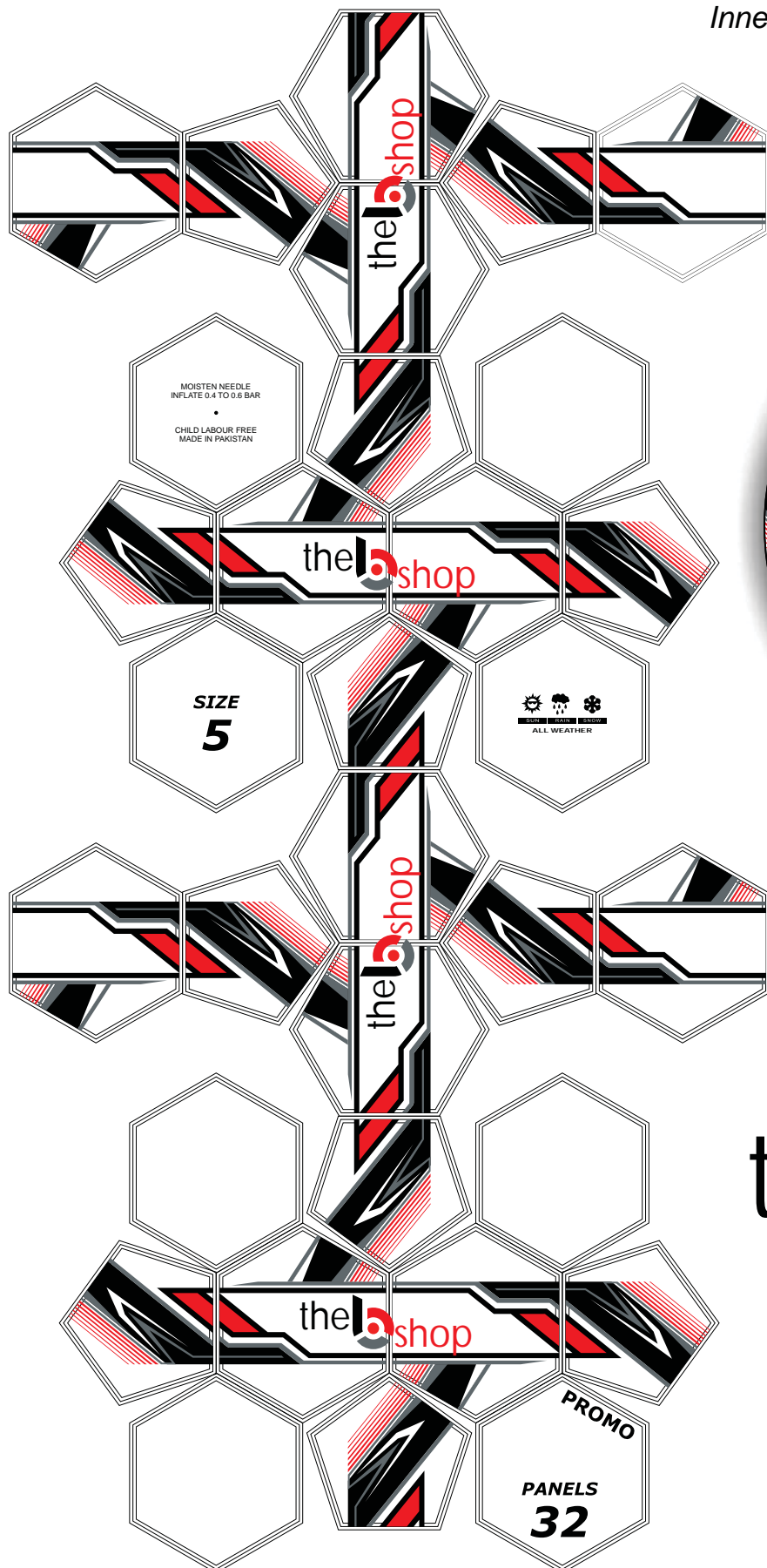
Layers: 2

Thickness: 1.1 mm

Sewing: Hand Stitched

Sealed: NO

Inner tube: Latex bladder with Butyl Valve





PROMO

Material: correct PVC

Layers: 2

Thickness: 1.1 mm

Sewing: Hand Stitched

Sealed: NO

Inner tube: Latex bladder with Butyl Valve

